



# sam\_2023-12-12\_05-39-11\_Connect.pcrd

01/16/2024 08:00

## Report Information

**User:** BioRad/sam  
**Data File Name:** sam\_2023-12-12\_05-39-11\_Connect.pcrd  
**Data File Path:** C:\Users\Samb\Downloads\20231212-qpcr  
**Well Group Name:** All Wells  
**Report Differs from Last Save:** Yes

## Run Setup

### Run Information

**Run Date:** 12/12/2023 05:39  
**Run User:** sam  
**Run Type:** User-defined  
**Plate File:** Sample Plate\_96 wells\_SYBR.pltd  
**ID:**  
**Notes:**  
**Sample Volume:** 20  
**Temperature Control Mode:** Calculated  
**Lid Temperature:** 105  
**Base Serial Number:** BR006896  
**Optical Head Serial Number:** 788BR07000

### Protocol

- 1: 98.0°C for 3:00
- 2: 98.0°C for 0:10
- 3: 60.0°C for 0:30  
Plate Read
- 4: GOTO 2, 39 more times
- 5: Melt Curve 65.0°C to 95.0°C: Increment 0.5°C 0:05  
Plate Read

### Plate Display

	1	2	3	4	5	6	7	8	9	10	11	12
A	Unk-1 CAct 10ng	Unk-1 CAct 10ng		Unk-2 CAct 1ng	Unk-2 CAct 1ng		NTC-1 CAct	NTC-1 CAct				
B												
C												
D												
E												
F												
G												
H												

## Quantification

Step #: 3

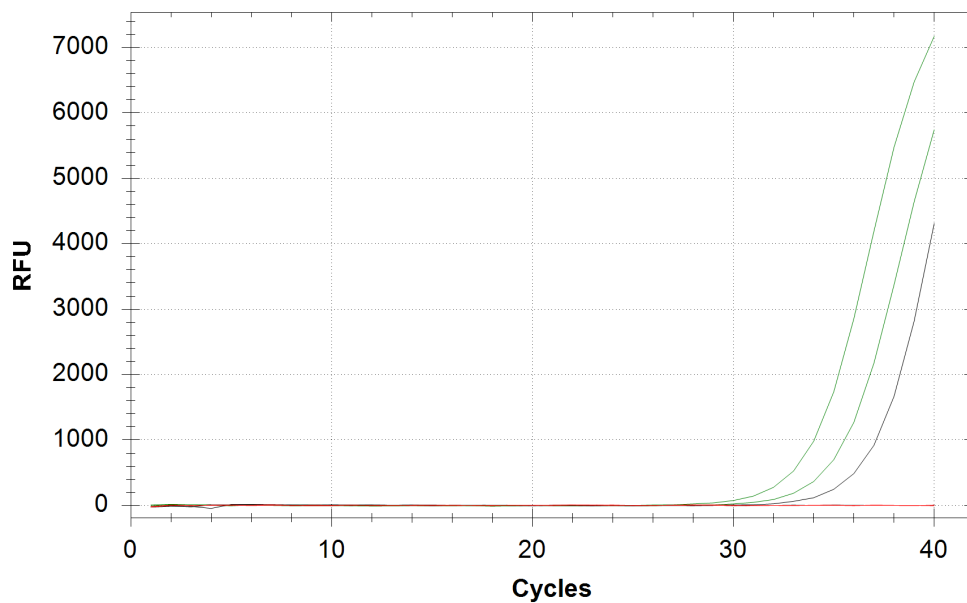
Analysis Mode: Target

Cq Determination: Regression

Baseline Method:

CAct: Auto Calculated

### Amplification

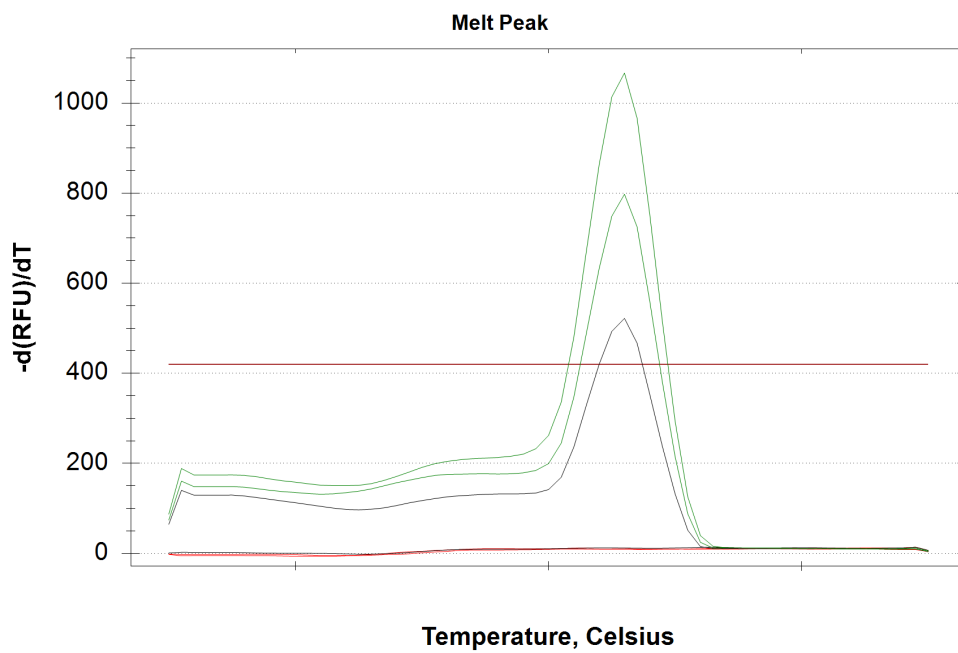
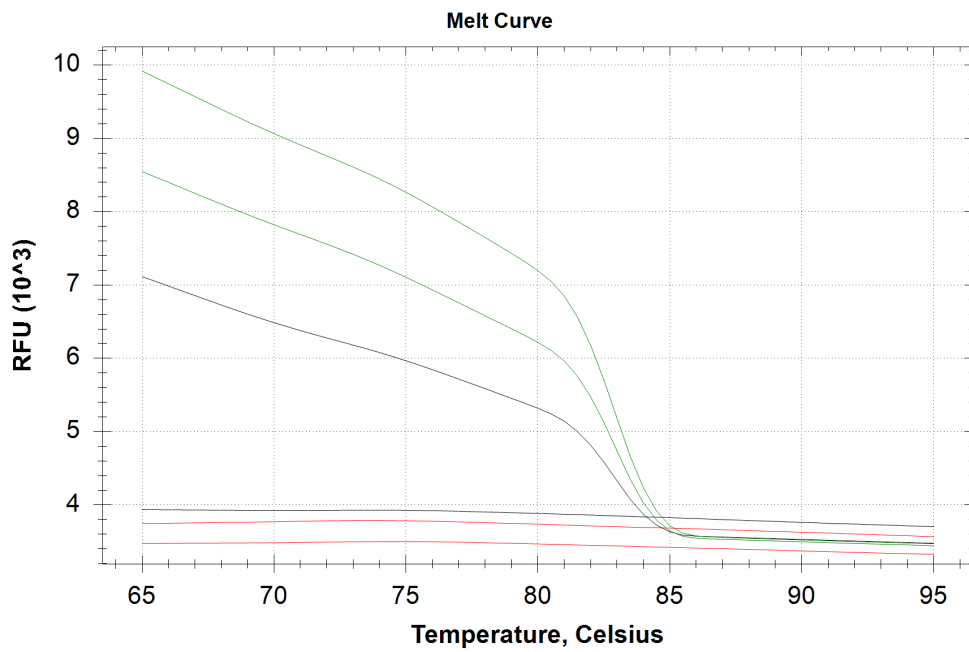


### Quantification Data

Well	Fluor	Target	Content	Sample	Cq	Cq Mean	Cq Std. Dev
A01	SYBR	CAct	Unkn-1	10ng	35.01	33.81	1.703
A02	SYBR	CAct	Unkn-1	10ng	32.60	33.81	1.703
A04	SYBR	CAct	Unkn-2	1ng	N/A	0.00	0.000
A05	SYBR	CAct	Unkn-2	1ng	36.61	36.61	0.000
A07	SYBR	CAct	NTC-1		N/A	0.00	0.000
A08	SYBR	CAct	NTC-1		N/A	0.00	0.000

### Melt Curve

Step #: 5



Melt Curve Data

Well	Fluor	Target	Content	Sample	Melt Temp
A01	SYBR	CAct	Unkn-1	10ng	83.00
A02	SYBR	CAct	Unkn-1	10ng	83.00
A04	SYBR	CAct	Unkn-2	1ng	None
A05	SYBR	CAct	Unkn-2	1ng	83.00
A07	SYBR	CAct	NTC-1		None
A08	SYBR	CAct	NTC-1		None

QC Parameters

## Data

Description	Value	Use	Results	Exclude Wells	All excluded wells
Negative control with a Cq less than	38	True		False	
NTC with a Cq less than	38	True		False	
NRT with a Cq less than	38	True		False	
Positive control with a Cq greater than	30	True		False	
Unknown without a Cq	N/A	True	CAct:A4.	False	
Standard without a Cq	N/A	True		False	
Efficiency greater than	110.0	True			
Efficiency less than	90.0	True			
Std Curve R <sup>2</sup> less than	0.980	True			
Replicate group Cq Std Dev greater than	0.20	True	CAct:A1, A2.	False	